




## Specification

 Before you use the brightness sensor, please read this file first and save it for

**We will struggle and serve for the booming development of LED industry!**

# User Manual

## Statement

Any companies or privates cannot copy, transcribe or translate part or whole content of this file without our written permission. And cannot use it on any business or benefit filed with any forms.

The specifications and information which are mentioned on the file is for reference only, if there' s update, we will not inform you. This file is only for guidance, and all information will not be for any promises.

# CATALOG

Statement.....	2
CATALOG.....	1
Guiding.....	1
Brief Introduction.....	1
Connect with relay:.....	6
Y series connect with VMF.....	9

# Guiding

## Brief Introduction

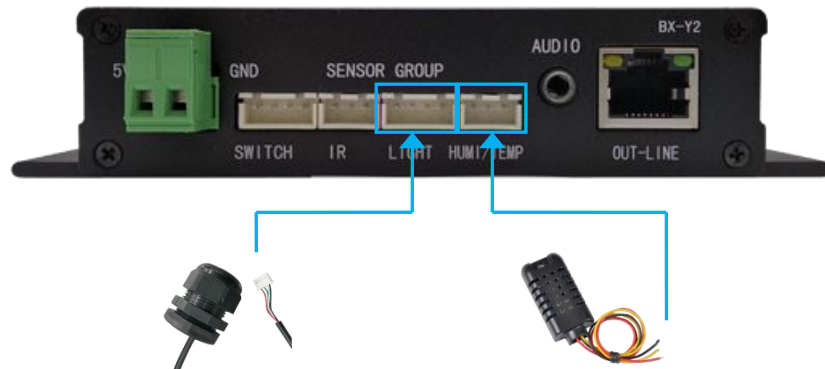
There are several sensors ports on Y series playing box which can support brightness, temperature, humidity, smoke, etc. And Y series player can remotely control LED screen on ON/OFF part if connects with BX-VMF controller or relay module.

For connections, please check the below(Use our latest software):

### Y2\Y2L\Y3 series port

#### 1. Y2\Y2L\Y3series connect with brightness or temp&humid sensor

Please check the below picture, plug into the corresponding port with light and HUMI/TEMP.



#### 2. Y2\Y2L\Y3 series connect with environment sensor:

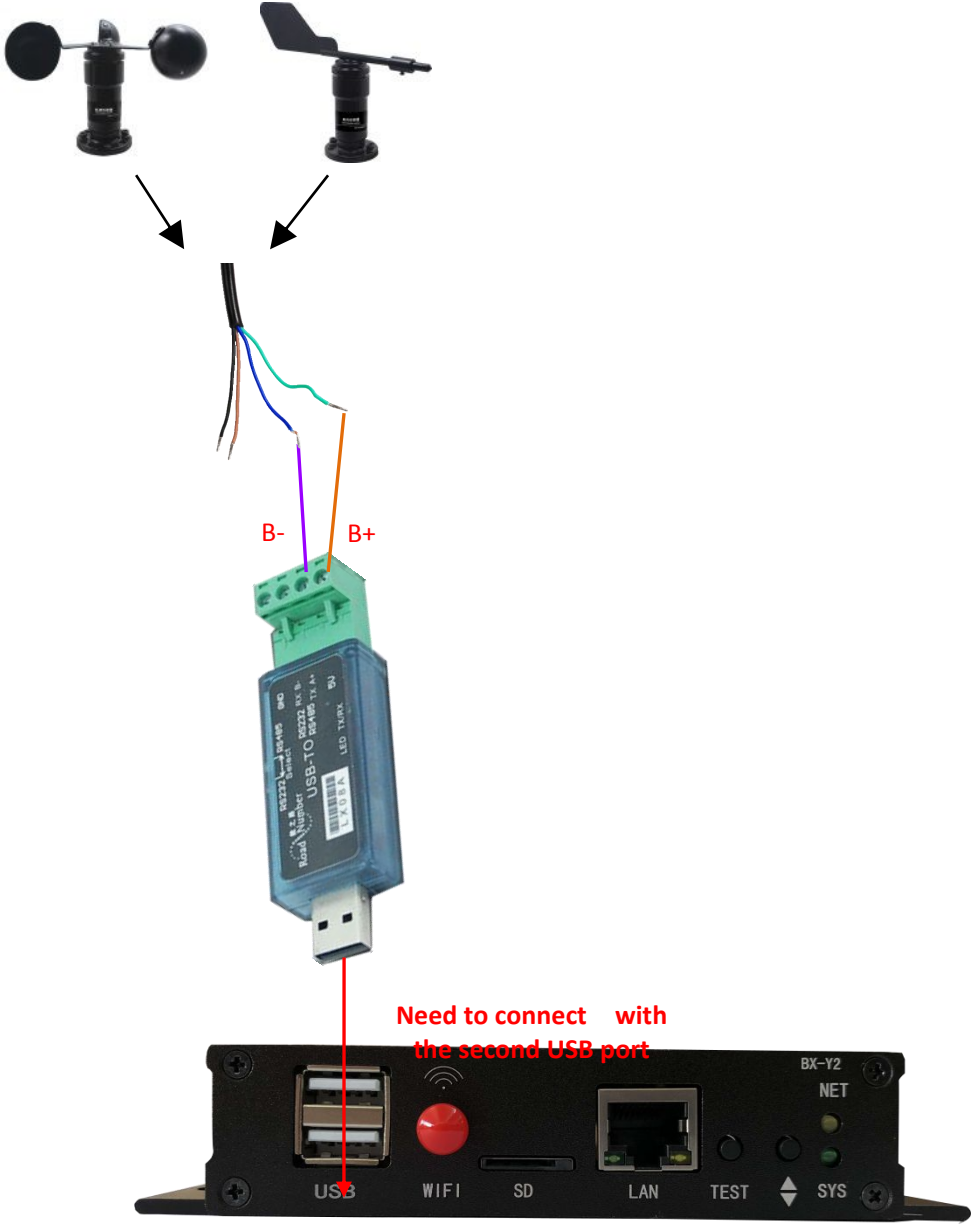
Connect wind speed sensor, wind direction sensor, air quality sensor and noise sensor with controller by “USB-RS485 converter” .

Wind speed sensor and wind direction sensor: GREEN -- B+; BLUE -- B-.

Air quality sensor and noise sensor: YELLOW -- B+; BLUE -- B-.

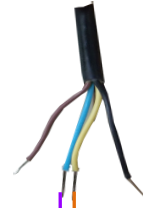
Wind speed

Wind direction



Air Quality

Noise



B- B+



Need to connect with the second USB port



## Y04\Y08 series port

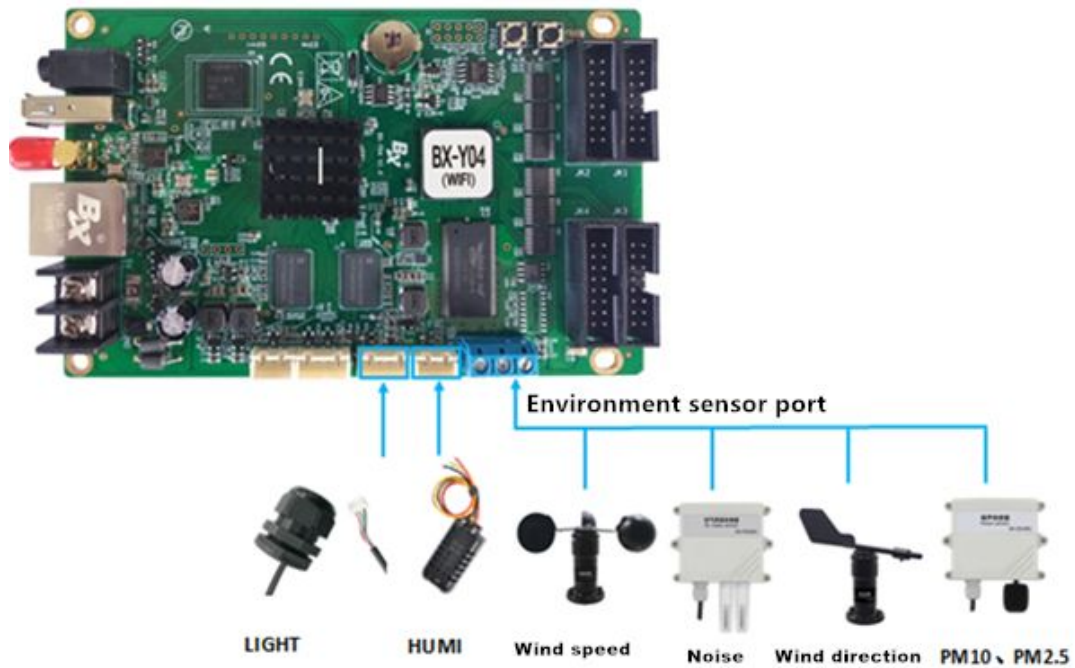
### 1. Y04\Y08 series connect with brightness and temp&humid sensor:

Please check the below picture, plug into the corresponding port with light and HUMI/TEMP.

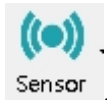
### 2. Y04\Y08 series connect with environment sensor:

Wind speed and wind direction: GREEN -- D+; BLUE -- D-.

Air quality and noise sensor: YELLOW -- D+; BLUE -- D-.

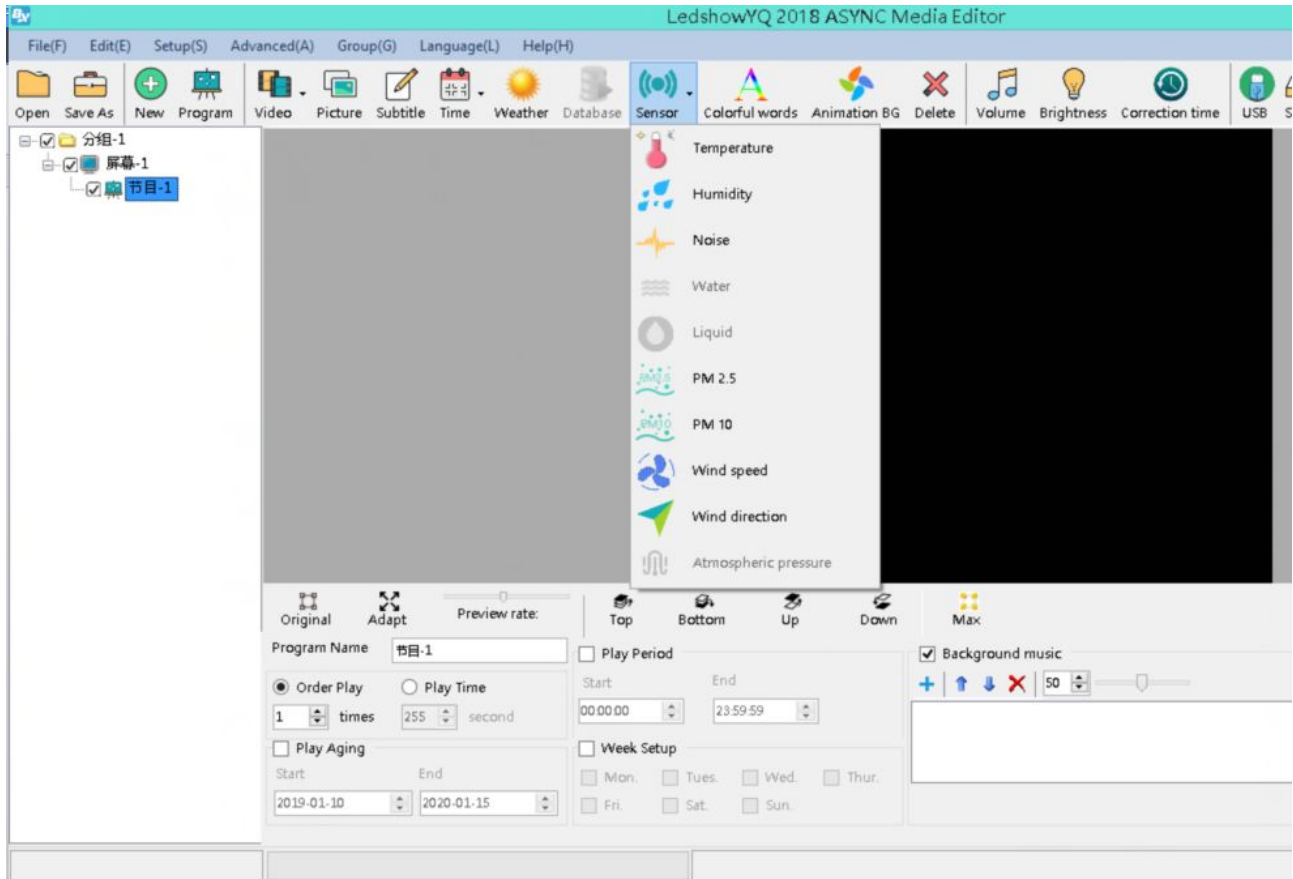


Add sensor in software



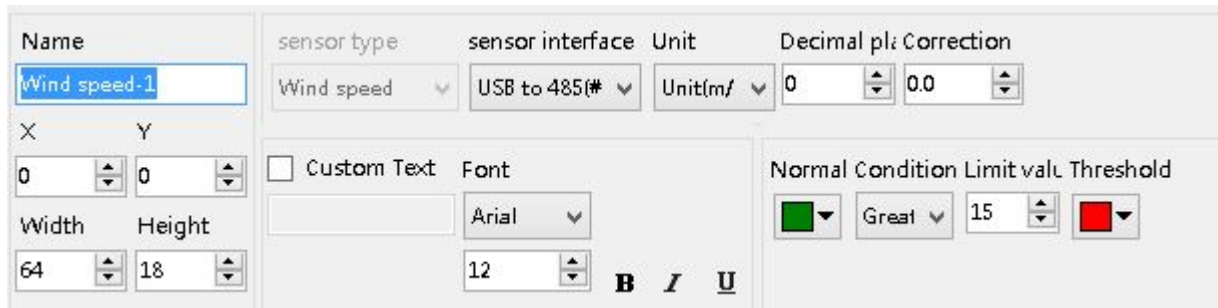
After connect with controller, please start LedshowYQ2018---Add a program---click

as below:



### Properties of Wind Speed Sensor Area

Users can set the sensor interface, unit, decimal places, correction, custom text, font, font size, etc. As below:

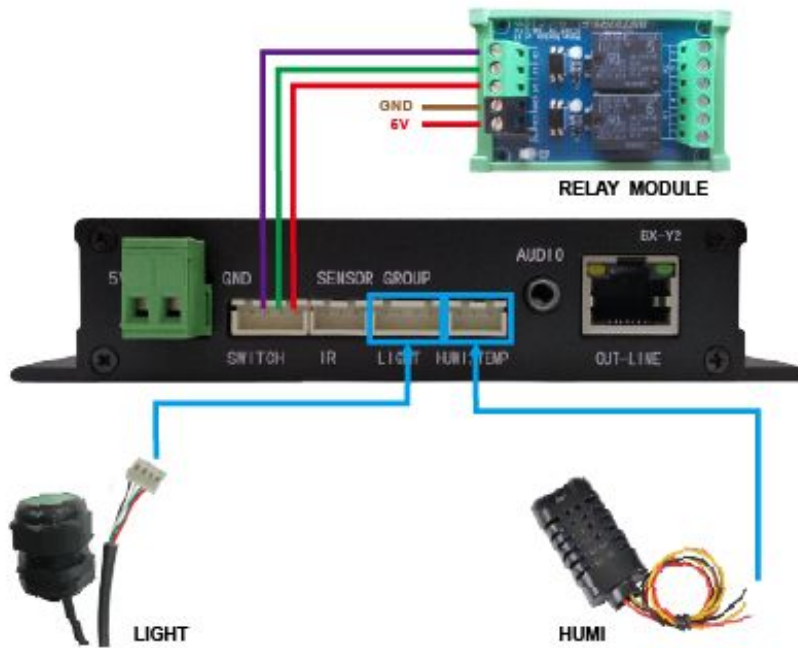




## Connect with relay:

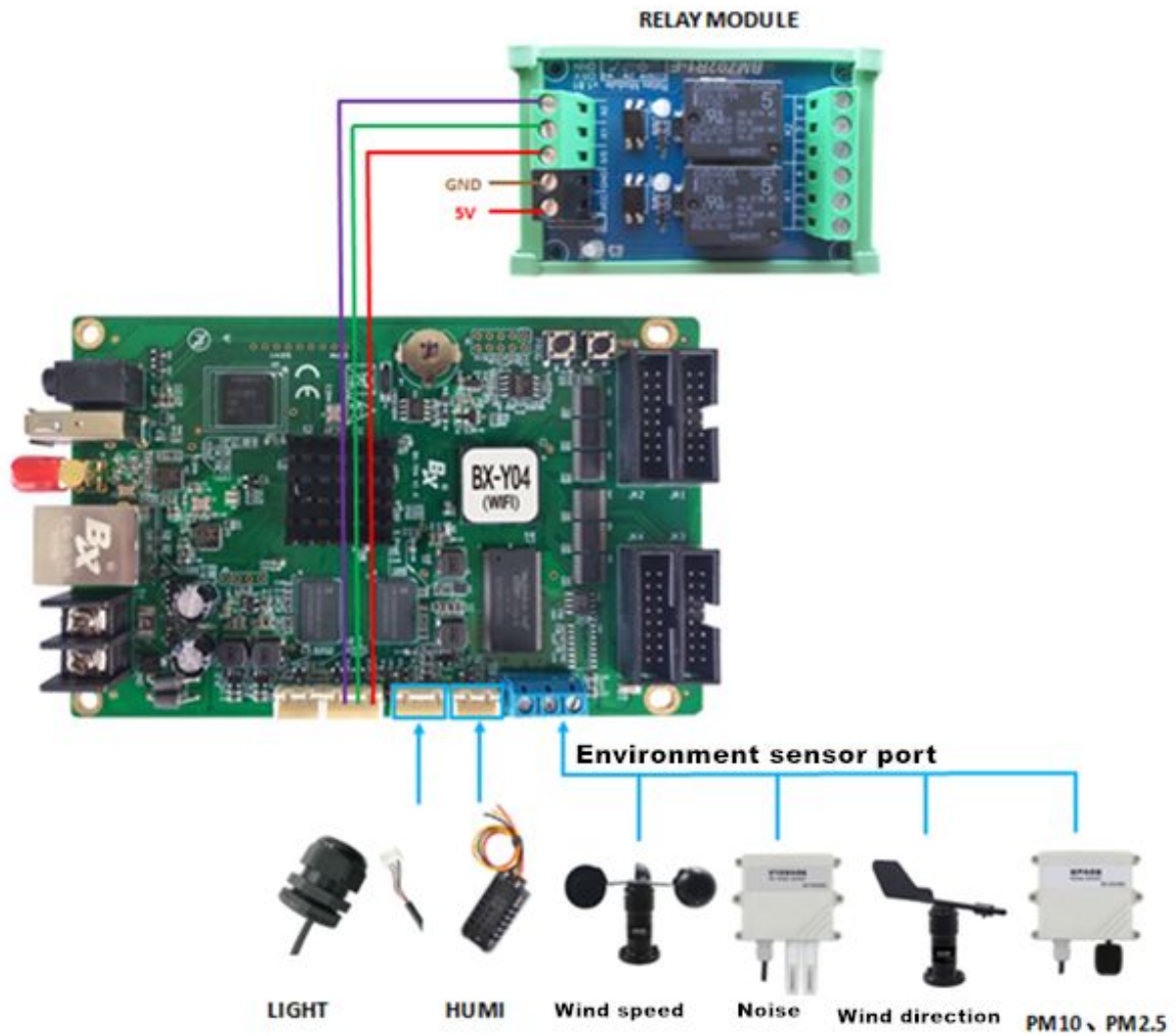
### 1. Y2\Y2L\Y3 series connect with replay module:

Please check the below picture, connect S/S、X1、X2 ports on relay module with “switch” port on controller.



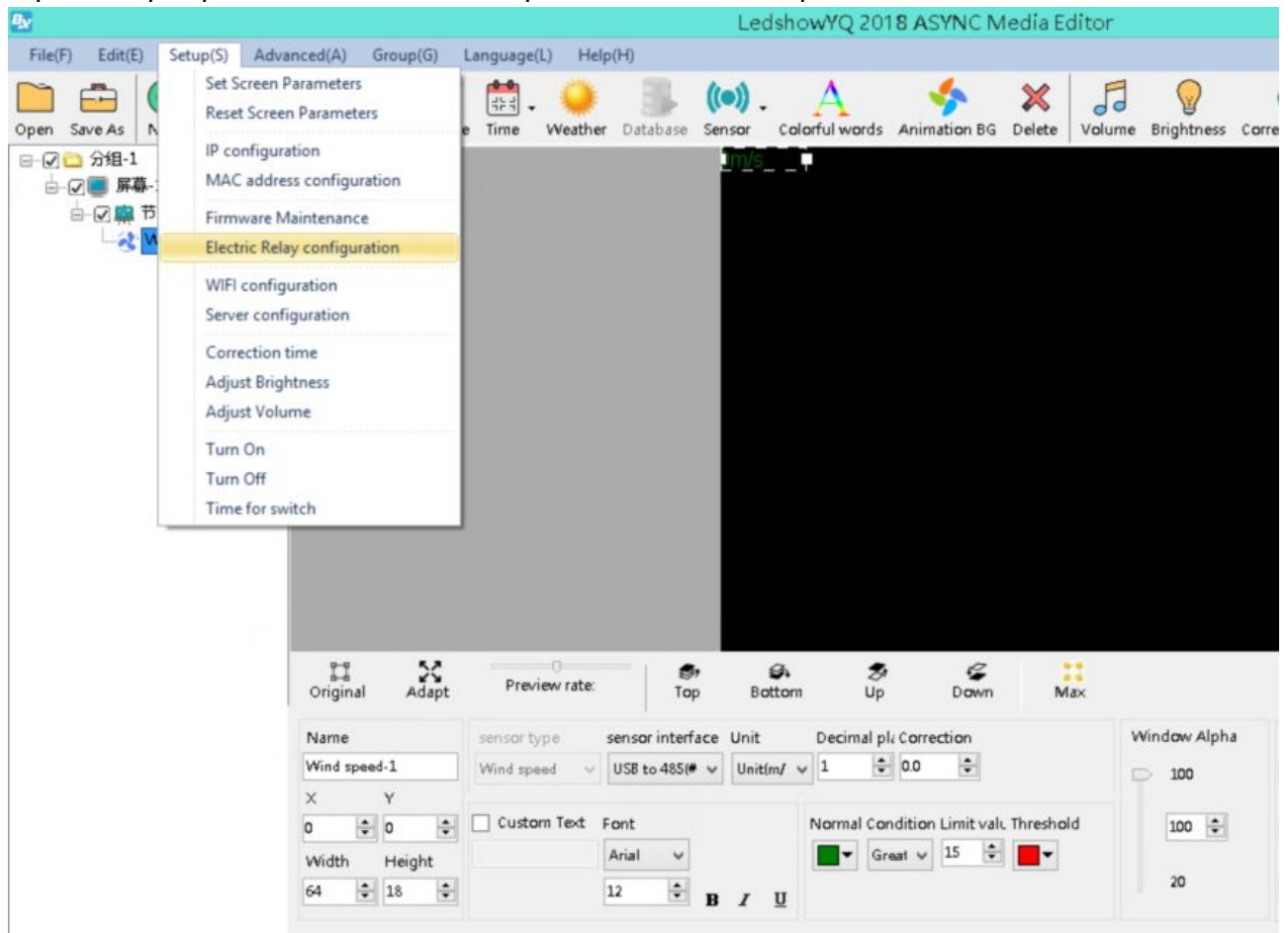
### 2. Y04\Y08 series connect with relay module:

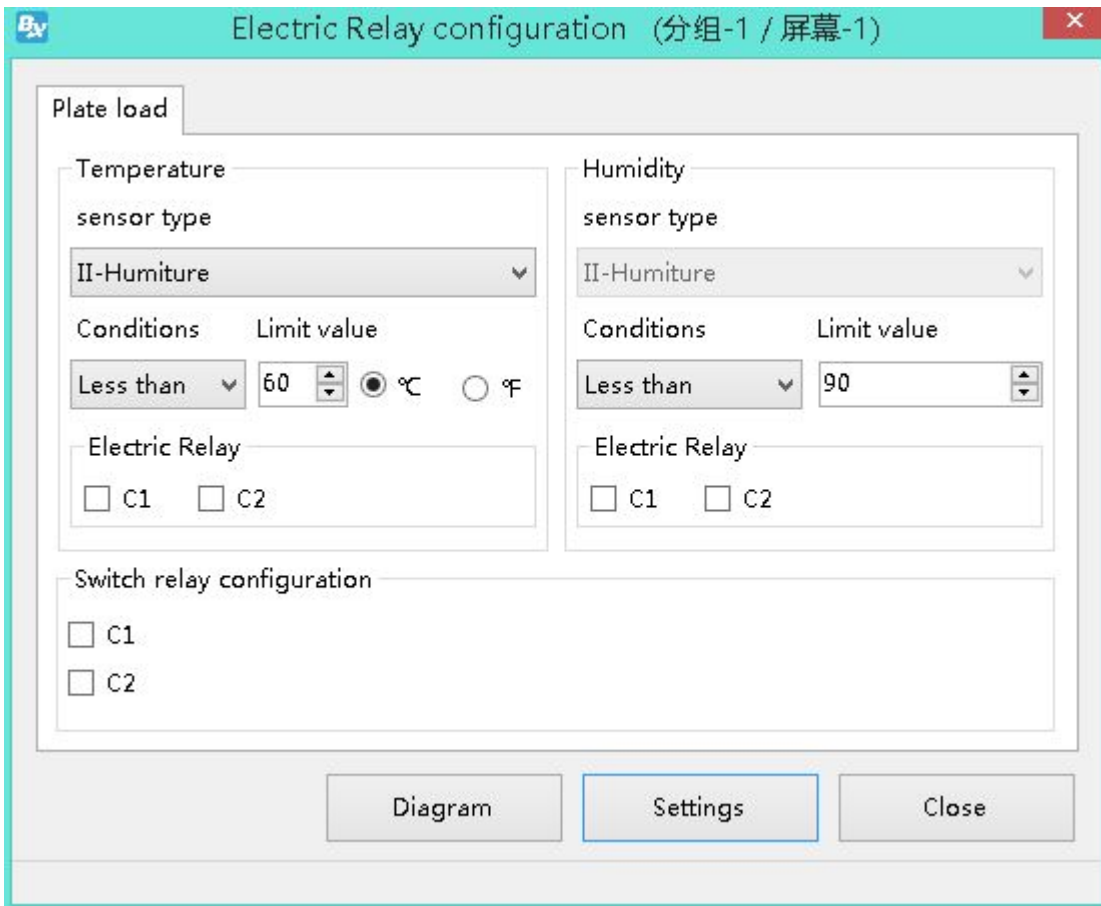
Please check the below picture, connect S/S、X1、X2 ports on relay module with “switch” port on controller.



## Relay configuration in software

Start LedshowYQ 2018---Add a program---Select “Electric Replay configuration” under “setup” --- input passwords 888--- select plate load--- set the parameters.

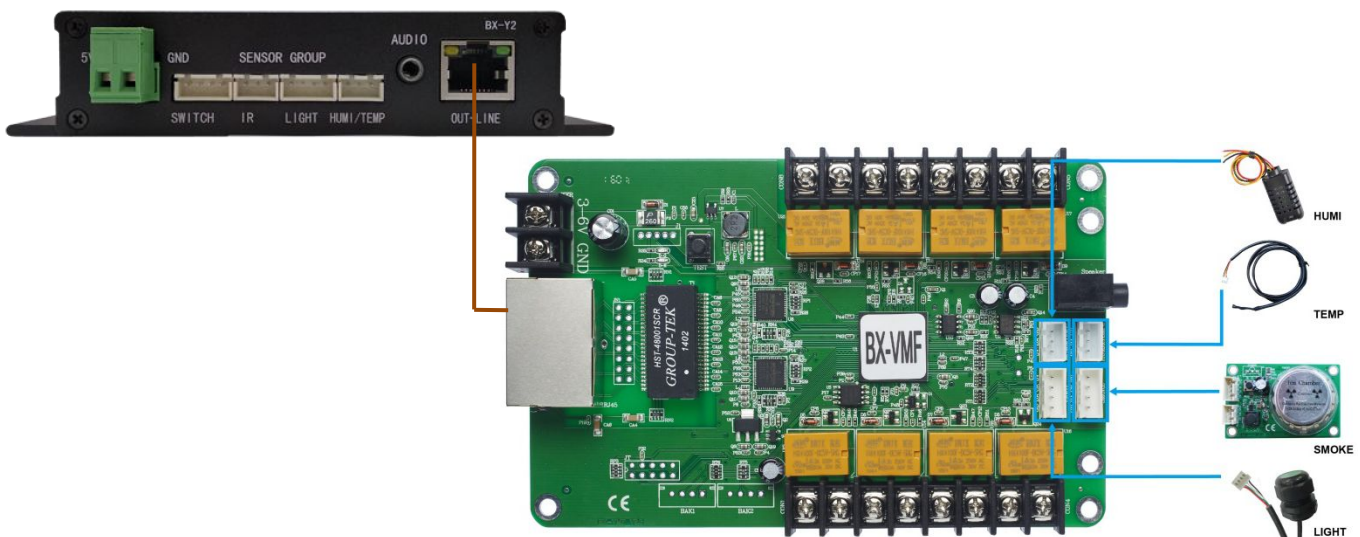




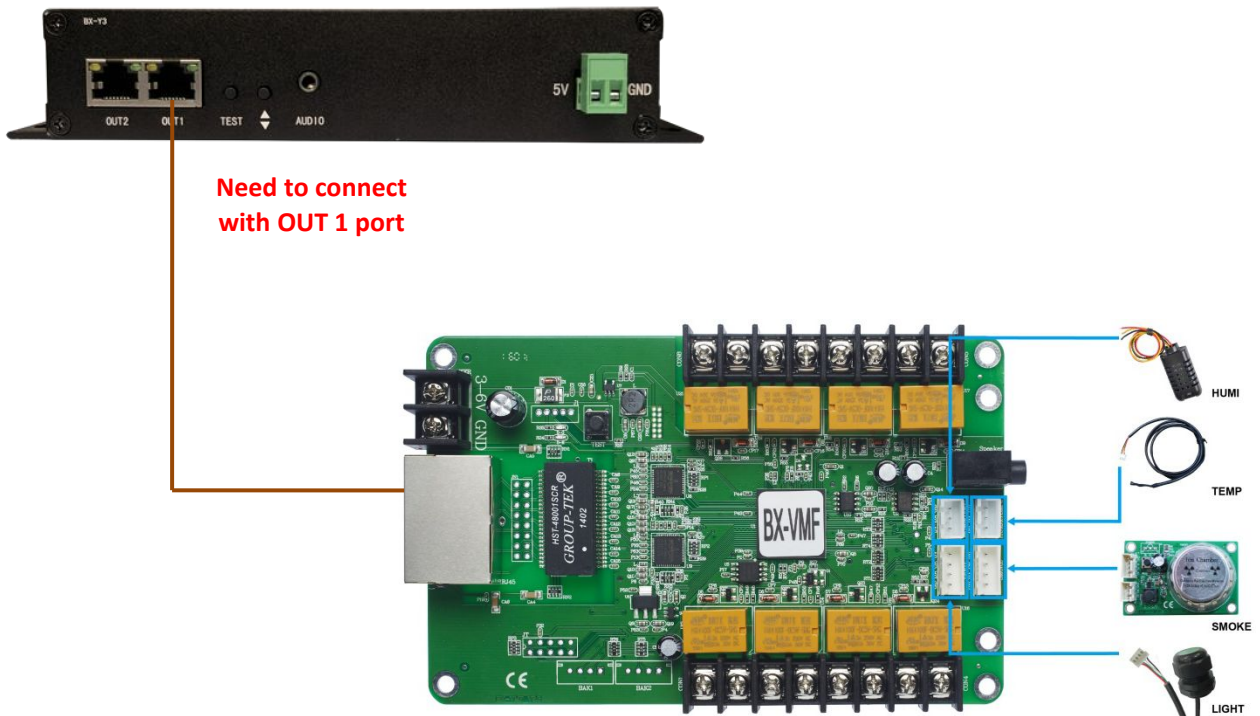
## Y series connect with VMF

### Y2\Y2L series port

Connect BX-VMF with controller by LAN cable, then, connect each sensor to the corresponding port on BX-VMF.

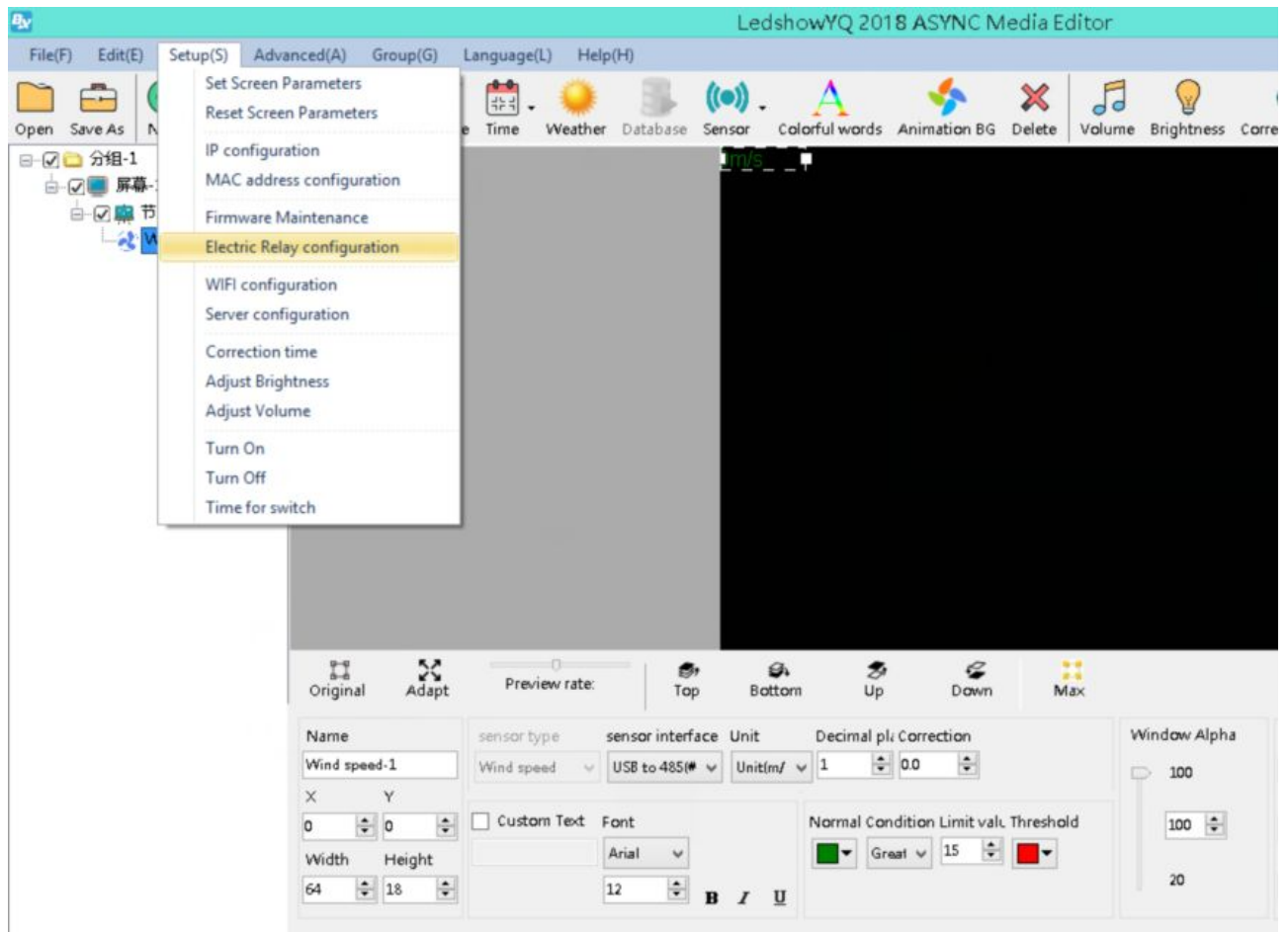


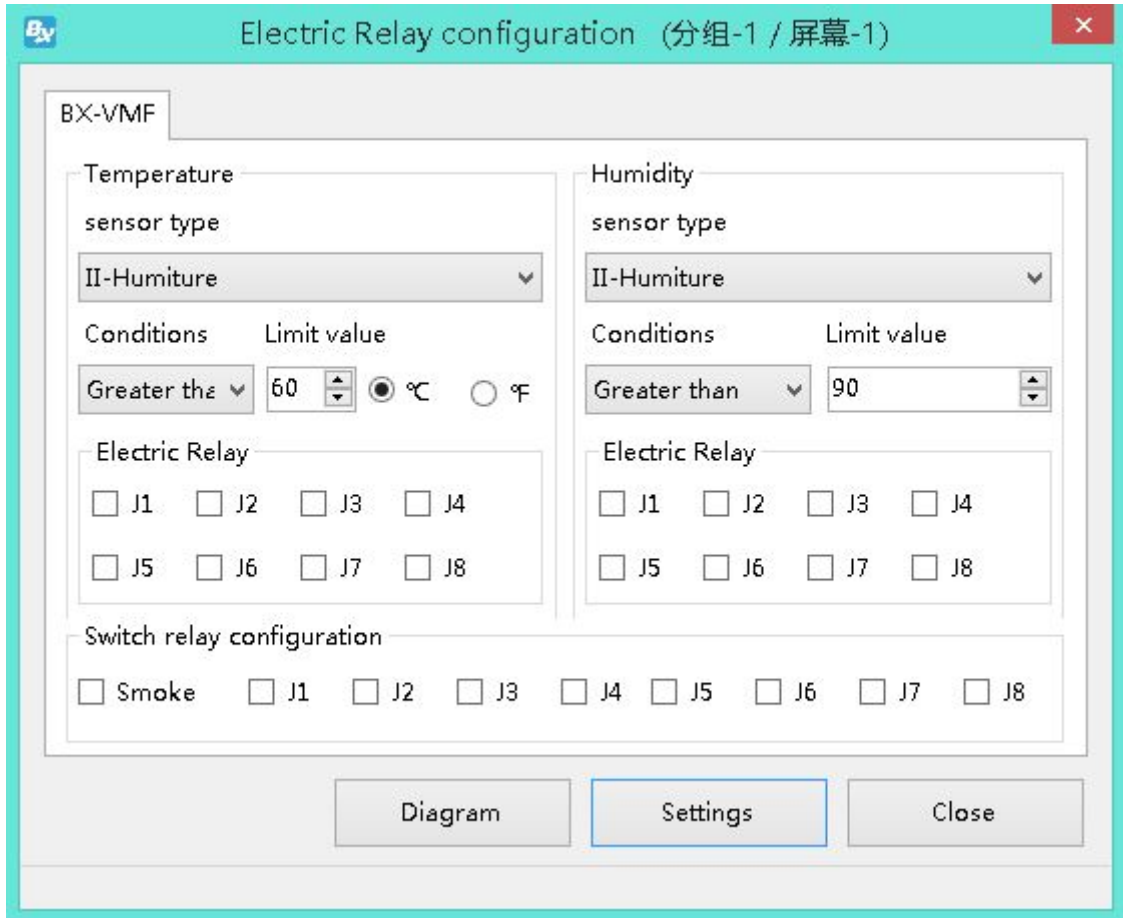
## Y3 series port



## Relay configuration in software

Start LedshowYQ 2018--- Add a program--- Select "Electric Relay Configuration" --- input passwords 888--- select "BX-VMF" --- set the parameters.





Note: Choose 5V power supply, trigger signal 5V.

## Contact Us

### Shanghai ONBON Technology Co.,ltd (Headquarters)

Address: 7 Floor, Tower 88, 1199#, North Qinzhou Road, Xuhui District, Shanghai City, China

Tel Phone: 086-21-64955136

Fax: 086-21-64955136

Website: [www.onbonbx.com](http://www.onbonbx.com)

### ONBON (Jiangsu) Optoelectronic Industrial Co.,LTD

Address: 1299#, Fuchun Jiang Road, Kunshan City, Jiangsu Province, China

### Sales Contacts

Tel: 0086-15921814956 0086-15800379719

Email: [onbon@onbonbx.com](mailto:onbon@onbonbx.com)

### Second Development

Tel: 0512-66589212

Email: [dev@onbonbx.com](mailto:dev@onbonbx.com)

### iLEDCloud

Website: <http://www.iledcloud.com/>



Public Wechat



ONBON APP